

# Optimize Land Mapping in ArcGIS Pro

A suite of 14 ArcGIS Pro-integrated GIS mapping tools that enhance land records mapping through precise drawing and editing, helping teams meet strict standards and work more accurately and efficiently in complex GIS environments.

## Benefits

### Mathematically Accurate Outputs

Eliminate spatial distortion and meet acreage tolerance requirements with advanced tools such as Clip, Divide, and Quartering. Achieve precise land division and customization.

### Faster Digitization

Convert legacy land agreements into digitally mapped polygons in weeks instead of months.

### Automated Workflows

Reduce mapping time by up to 40% compared to generic GIS tools with automations for legal descriptions, land calculations, and spatial editing.

### User-friendly Interface

Simplify parcel creation, modification, and management with guided interfaces — designed for both experts and junior mappers

## Features

### Seamless ArcGIS Pro Integration

Work within your existing GIS environment with full integration for a smooth, familiar user experience.

### Quartering Tool

Automatically divide sections into quarters based on US Bureau of Land Management standards or other configurations using mathematically accurate calculations and snapping logic. Ensure precision and consistency — ideal for base-level agreement mapping with Pandell AutoMapper outputs.

### Metes and Bounds Tool

Our most advanced tool in the suite, this feature interprets complex legal descriptions with built-in logic for curves, tangent angles, and deflections. Support quadrant bearings, azimuths, and radius-based calls — no manual calculations required.

### Clip Tool

Precisely clip polygons along natural or legal boundaries such as rivers or roads. Avoid re-digitization and eliminate vertex-level edits. This is vital for thorough land evaluations.

### Buffer Tool

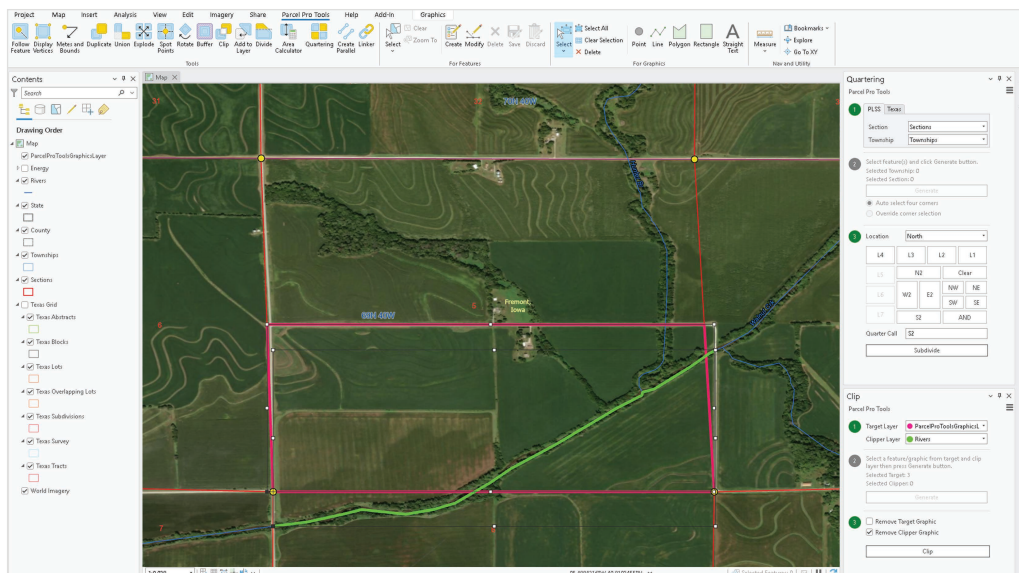
Create circular, square, or elliptical buffer zones around any geographical feature for precise planning. Ideal for mapping pipelines, easements, rights-of-way, or protective zones across various boundaries.



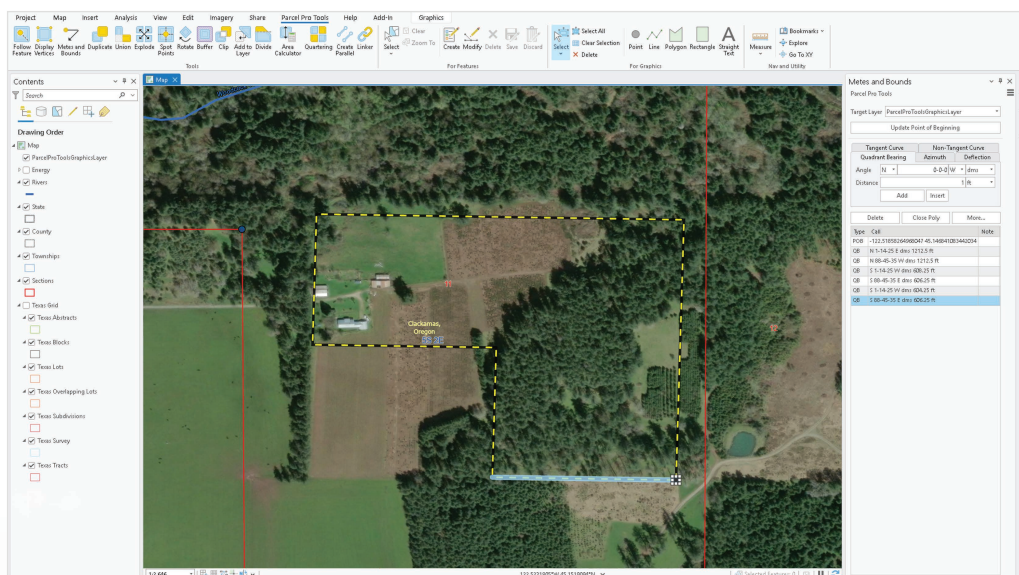
## Who It's For

Whether you are a GIS specialist, land surveyor, real estate developer, or land management professional, Pandell Parcel Pro Tools delivers the clarity and productivity you need for complex land rights mapping.

## Screenshots



Streamline land analysis by quartering large parcels and clipping relevant geometry, enabling focused, parcel-level insights for efficient project planning.



Digitize legal land descriptions into precise, mappable boundaries for title validation and acquisition.

For Pricing, Demos and More Information, visit

# PANDELL.COM

ESG provides a complete software platform for energy providers, enabling critical solutions in market and asset management. ESG combines a SaaS architecture, flexible integration, infrastructure planning data, and continuous innovation with sector expertise and decades of experience to provide the most adopted software platform in global energy markets, including Energy Retail and Renewables. The company serves over 800 blue chip energy players and over 40 million end users worldwide. Learn more at [www.esgglobal.com](http://www.esgglobal.com).